

Committee on Priorities and Resources  
Meeting Minutes – November 19, 2019

In attendance: Professor Javier Corrales, chair; Professor Andrew Dole; Professor Jill Miller; Professor Monica Ringer; Library Administrative Assistant/Bookkeeper Susan Bradley; Director of Financial Planning Thomas Dwyer, *ex officio*; Provost and Dean of the Faculty Catherine Epstein, *ex officio*; Assistant Director of Athletics Kelly Mannix; Chief Human Resources Officer Maria-Judith Rodriguez, *ex officio*; Chief Financial and Administrative Officer Kevin Weinman, *ex officio*; Benjamin Gilsdorf '21; Brooke Harrington '22, *ex officio*; Sydney Ireland '23; Steven Hegarty, recorder

Guests: Director of Institutional Research and Registrar Services Jesse Barba; Associate Dean and Director of Global Education Office Janna Behrens

The meeting came to order at 8:30 am.

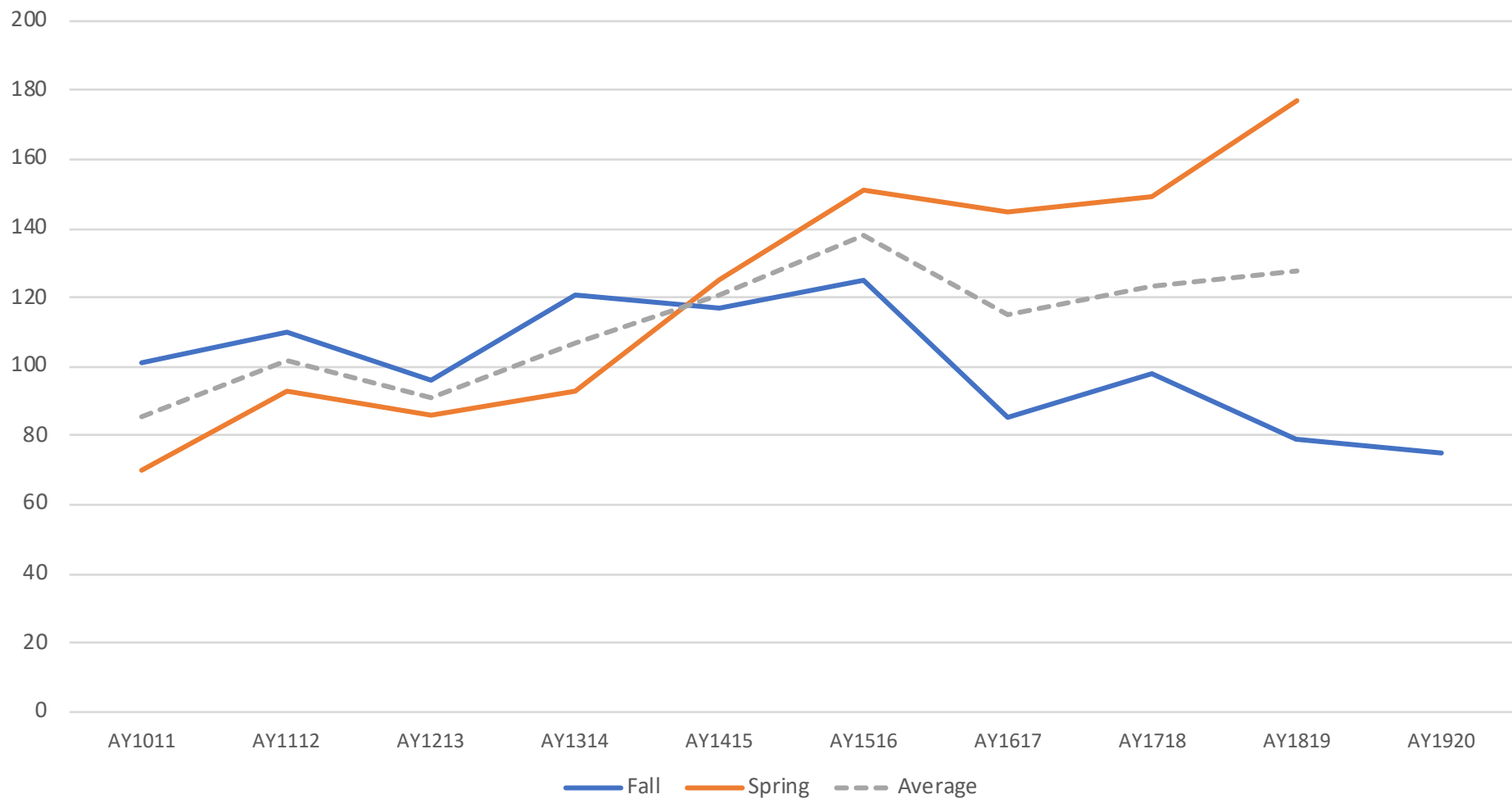
Proceedings

1. Presentation on the impact of study abroad seasonality on campus room and board conditions (Jesse and Janna).
  - a. Data shows an up and down pattern between fall and spring semesters for on-campus enrollment numbers. The variance has been growing since 2010. In the 2018-19 academic year, there was a difference of 134 fewer students on campus in the spring term.
  - b. Imbalance between semesters is an issue for the enrollment management committee. Additional effects are felt on busier course registrations in the fall and dorm capacities.
  - c. Survey of students indicated peer influence and winter weather affecting the preference for spring semester study away.
  - d. Amherst is converting to a home tuition model for study away. It is unknown how this may affect overall and by semester program enrollments.
2. The imbalance is a common problem at peer institutions, ideas to mitigate:
  - a. Disseminate information about the problem and encourage students start to think about studying abroad in the fall semester. Be more encouraging of Seniors interested in fall semester study abroad.
  - b. Consider offering a financial incentive or a housing preference for fall study away.
  - c. Place a cap on Spring semester enrollment with a competitive application process. This may create push back from students, parents, and faculty.
  - d. Return to a single deadline for declaring intent in February or March of the prior academic year.
  - e. Involve the CEP to consider altering the deadline for course submissions, and encourage departments to provide earlier advance notice about available courses.
  - f. Influence the student choice. In 2020, the Global Education office and Loeb Center are piloting a program for an international summer internship leading to the fall semester away. Three or four funding opportunities have been identified and, if successful, can be built on. The model is flexible and can switch to spring plus summer if the balance shifts.

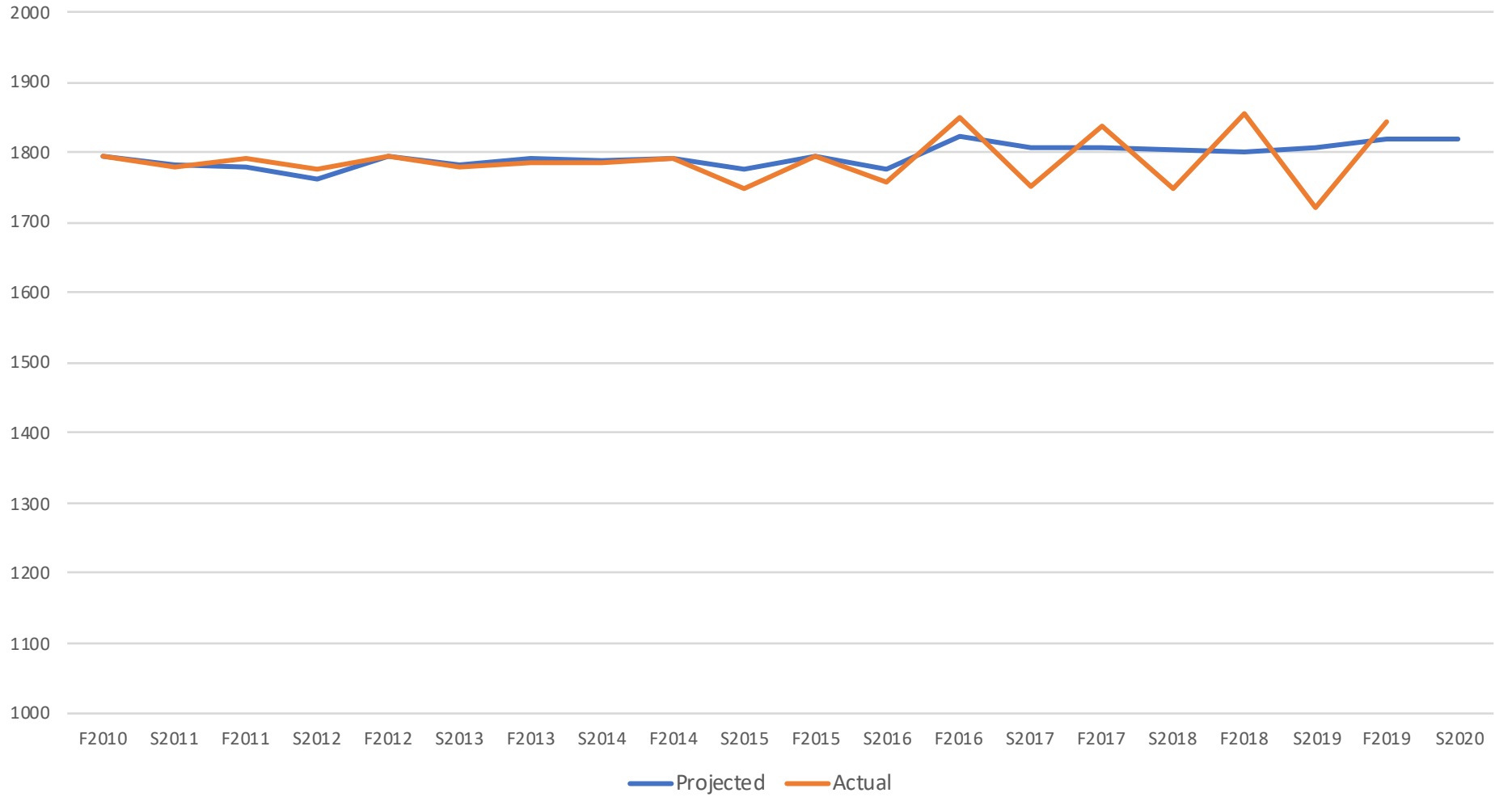
Adjourned 9:35 am.

Respectfully submitted,  
S Hegarty

**Study Away by Term, Academic Year 2011-2012 to 2019-2020**



## Projected vs Actual Enrollment



# Enrollment Difference Between Fall & Spring Semesters

